

# JVC

## Digital Photo Navigator

ENGLISH



## ***INSTRUCTIONS***

LYT0938-001B

---

<b>INTRODUCTION</b> .....	<b>4</b>
Reading this document .....	4
<b><i>Loading Still Images (Windows®)</i></b> .....	<b>5</b>
<b>CAPTURING IMAGES</b> .....	<b>6</b>
Capturing still images from tape .....	6
Controller window .....	8
Automatic Capture .....	8
Capturing still images from the camcorder in real time .....	11
Changing the transfer speed .....	12
<b>ADDING STILL IMAGES TO AN ALBUM</b> .....	<b>13</b>
<b>EXITING DIGITAL PHOTO NAVIGATOR</b> .....	<b>15</b>
<b><i>Playing Back and Handling Images (Windows®)</i></b> .....	<b>16</b>
<b>LOADING AN ALBUM</b> .....	<b>17</b>
<b>DISPLAYING STILL IMAGES</b> .....	<b>18</b>
Displaying a selected still image .....	18
Displaying a series of images .....	18
Enlarging and reducing images .....	19
<b>ORGANIZING ALBUMS</b> .....	<b>20</b>
Selecting multiple still images .....	20
Deleting unnecessary still images .....	21
Copying still images .....	21
<b>SENDING IMAGES FROM AN ALBUM IN E-MAIL</b> .....	<b>22</b>
<b>CREATING A WEB PAGE</b> .....	<b>23</b>
<b>CHANGING THE IMAGE SIZE OR PICTURE QUALITY</b> .....	<b>25</b>
Changing the image size .....	25
Changing the picture quality, etc. ....	26
<b>RETRIEVING STILL IMAGES FROM AN ALBUM</b> .....	<b>27</b>
<b>CREATING A LIST OF STILL IMAGES</b> .....	<b>28</b>
<b>CREATING A SLIDE SHOW OR AN ANIMATION</b> .....	<b>29</b>

<b>Digital Photo Navigator (Macintosh)</b> .....	<b>30</b>
<b>STARTING DIGITAL PHOTO NAVIGATOR</b> .....	<b>31</b>
Digital Photo Navigator window .....	32
<b>CAPTURING IMAGES</b> .....	<b>34</b>
Capturing still images from tape .....	34
Capturing still images from the camcorder in real time .....	34
Automatic Capture .....	35
Changing the transfer speed .....	39
Changing the image size .....	39
Changing the connecting port .....	39
<b>EXITING DIGITAL PHOTO NAVIGATOR</b> .....	<b>40</b>
<b>HANDLING THE CAPTURED IMAGES AFTER CAPTURING</b> .....	<b>41</b>
Saving the captured image in other directory .....	41
Saving the captured image in another file format .....	41
Saving the captured image in another image size .....	42
Saving the captured image after changing the field mode .....	42
<b>Appendix</b> .....	<b>43</b>
<b>TROUBLESHOOTING</b> .....	<b>44</b>
<b>INDEX</b> .....	<b>47</b>

**CAUTION:**

- Operate this equipment according to the operating procedures described in this manual.
- Use only the provided CD-ROM. Never use any other CD-ROM to run this software.
- Do not attempt to modify this software.
- Changes or modifications not approved by JVC could void user's authority to operate the equipment.

**How to handle a CD-ROM**

- Take care not to soil or scratch the mirror surface (opposite to the printed surface). Do not write anything or put a sticker on either the front or back surface. If the CD-ROM gets dirty, gently wipe it with a soft cloth outward from the center hole using a circular motion.
  - Do not use conventional disc cleaners or cleaning spray.
  - Do not bend the CD-ROM or touch its mirror surface.
  - Do not store your CD-ROM in a dusty, hot or humid environment. Keep it away from direct sunlight.
- The Readme.TXT file provides additional information for setup and information that is not included in the instruction manual. Please read the file before using the provided software program.
  - You can find the latest information (in English) on the provided software program at our world wide web server at <http://www.jvc-victor.co.jp/english/index-e.html>
- Microsoft® and Windows® are either registered trademarks or trademarks of Microsoft Corporation in the United States and/or other countries.
  - Macintosh is a registered trademark of Apple Computer, Inc.
  - Keyspan is a trademark of InnoSys Inc.
  - Other product and company names included in this instruction manual are trademarks and/or registered trademarks of their respective holders.

## Reading this document

This document consists of the following three sections and an Appendix. Before use, please read the Setup Guide for preparation.

### ■ Loading Still Images (Windows®)

This section explains how to capture images from the camcorder tape to the PC, or capture images from the camcorder in real time. This section also explains how to load still images into the album of the Digital Photo Navigator software.

### ■ Playing Back and Handling Images (Windows®)

This section explains how to handle still images using the Digital Photo Navigator software. You can send still images by e-mail and store an album as a web page.

### ■ Digital Photo Navigator (Macintosh)

This section explains how to capture images from the camcorder tape to the PC, or capture images from the camcorder in real time.

### ■ Appendix

This appendix contains troubleshooting and index.

---

---

## Loading Still Images (Windows®)

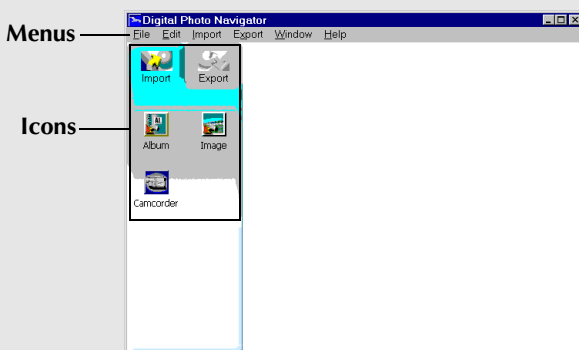
---

---

You can capture still images from the recorded camcorder tape, from the camcorder in real time, or load still image files from the hard disk in the PC. The Digital Photo Navigator software allows you to store and view still images in a photo album format.

The icons on the Digital Photo Navigator window have the same functions as the menus. In this section, almost all the procedures are explained using the icons.

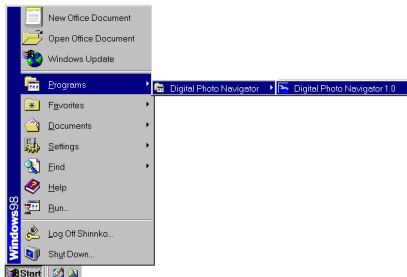
Read this section if you are using a Windows® operating system.



You can capture still images from the recorded camcorder tape, from the camcorder in real time, or load still image files from the hard disk in the PC. After capturing or loading images, create an album that contains a collection of still images.

## Preparation

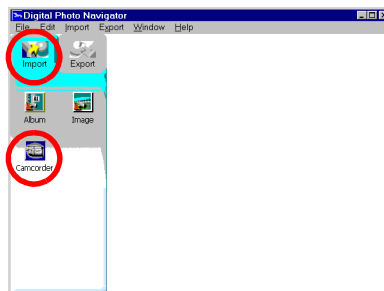
- 1 Connect the camcorder to the PC with the PC connection cable.
  - Refer to "CONNECTIONS (Windows®)" in the Setup Guide.
- 2 Select [Start] – [Programs] – [Digital Photo Navigator] – [Digital Photo Navigator 1.0].  
Digital Photo Navigator starts.
  - Close any other programs running on the PC.
  - Disable any programs that run in the background, such as screen savers, e-mail applications, virus checkers, schedulers, etc.
  - Turn off file and printer sharing.



## Capturing still images from tape

You can capture still images from the camcorder tape on the PC.

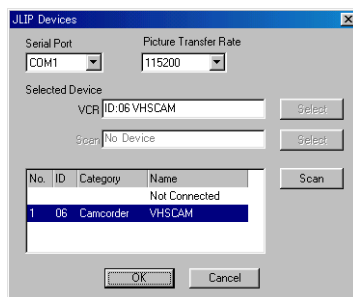
- 1 Set the Power Switch on the camcorder to "PLAY".  
The camcorder is now on.
- 2 Click [Import].
- 3 Click [Camcorder]. The Controller window appears.



### NOTE:

If the camcorder is not connected to the PC, the camcorder is turned off, or the camcorder is connected to any serial port other than COM1, the [JLIP Devices] dialog box appears.

- 1) Connect the camcorder to the PC with the PC connection cable.
  - Refer to "CONNECTIONS (Windows®)" in the Setup Guide.
- 2) Set the Power Switch on the camcorder to "PLAY".  
The camcorder is now on.
- 3) Select the appropriate setting for [Serial Port] depending on the port in use.
- 4) Click [Scan].
- 5) If the camcorder name [VHSCAM] appears, click [OK].



**4** Click the ► button in the Controller window.

- Playback of the camcorder tape starts.



**5** Click the Capture button when the desired image appears.

- The image is transferred to the PC and thumbnail image appears to the right-hand side of the Digital Photo Navigator window.



**6** Repeat steps 4 and 5 to capture additional images.

- It is possible to capture or add up to two hundred images into an album.

**7** Click [Export] after capturing is completed.

**8** Click [Album].

The [Save As] dialog box appears.

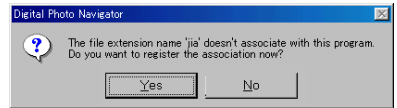
**9** Specify the location where you want to save the album, input the file name of the album, and then click [Save].

The album is saved.

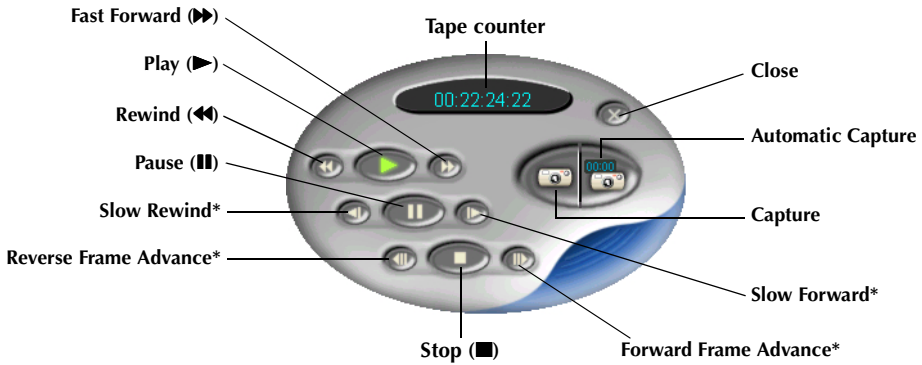


- If you save an album for the first time after the software installation, a message appears and asks if you want to register the association of the file extension name “jia”. Then, click [Yes].

- To exit Digital Photo Navigator, refer to “Exiting Digital Photo Navigator” (pg. 15).



## Controller window



\* This function is not available with VHS-C camcorders.

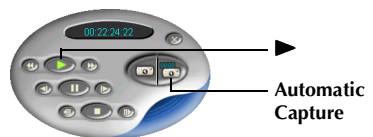
### NOTES:

- Use only the operation buttons in the Controller window to control the camcorder. If you operate the camcorder with its own operation buttons, the appearance of the Controller window may not correspond to the status of the camcorder, or it may cause a malfunction to occur in Digital Photo Navigator.
- The Controller window may appear to still be operating the camcorder even after the videocassette automatically stops at the beginning or end of the tape. In this case, click the Stop (■) button in the Controller window before performing another operation.
- If an image is captured in the Pause or Slow Play mode, some noise may appear on the captured image. In this case, capture the image during normal playback.

## Automatic Capture

You can automatically capture still images from the camcorder tape on the PC according to your preferences. There are 2 ways available: "Photo Capture" and "Interval Capture".

- 1 Set the Power Switch on the camcorder to "PLAY".  
The camcorder is now on.
- 2 Click the ▶ button in the Controller window.
- 3 Click the Automatic Capture button.  
The camcorder enters still playback mode.





**4** Go to steps in “Photo Capture” or “Interval Capture” below.

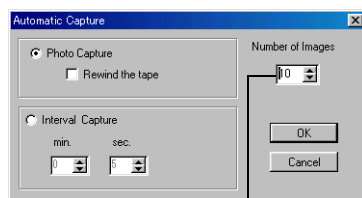
**NOTES:**

- Depending on your PC’s specifications and operating environment, the points where images are captured may not match what was set in the preferences.
- If the videotape is damaged, the points where images are captured may not match what was set in the preferences.
- Automatic capture may not function properly if portions of the videotape are unrecorded.
- Automatic Capture may not function properly when, for example, you capture images recorded after the recording speed was changed. In these cases, capture images by performing the steps in “Capturing still images from tape” (☞ pg. 6).
- Automatic capture stops when the number of images in the right-hand side of the Digital Photo Navigator window reaches 200 or the videotape ends.

## Photo Capture

You can capture only snapshot images recorded on a tape.

- 1** Select [Photo Capture] in the Automatic Capture window.
- 2** Set the number of images to be captured.
- 3** Click [OK]. The camcorder starts forward search and capturing is performed when each snapshot image is found out.
  - If you want to start the search from beginning of a tape, select [Rewind the tape] before clicking [OK].

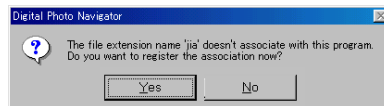


Number of images

- 4** Click [Export] after capturing is completed.
- 5** Click [Album].  
The [Save As] dialog box appears.
- 6** Specify the location where you want to save the album, input the file name of the album, and then click [Save].  
The album is saved.



- If you save an album for the first time after the software installation, a message appears and asks if you want to register the association of the file extension name “jia”. Then, click [Yes].
- To exit Digital Photo Navigator, refer to “Exiting Digital Photo Navigator” (☞ pg. 15).



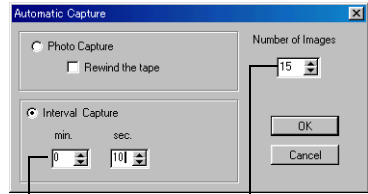
**NOTE:**

Photo Capture may not function properly when, for example, the camcorder tape includes snapshot images recorded after the recording speed was changed, or when snapshot images were continuously recorded. In these cases, capture images by performing the steps in “Capturing still images from tape” (☞ pg. 6).

## Interval Capture

You can capture images at specified intervals. This function is useful for summarizing the contents of a tape, or for watching time-lapse movies using the slide show.

- 1 Select [Interval Capture] in the Automatic Capture window.
- 2 Set the number of images to be captured.
- 3 Set the length of the interval (in minutes and seconds).
- 4 Click [OK].

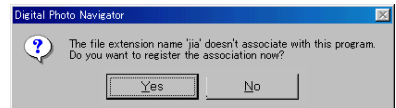


Length of the interval    Number of images

- 5 Click [Export] after capturing is completed.
- 6 Click [Album].  
The [Save As] dialog box appears.
- 7 Specify the location where you want to save the album, input the file name of the album, and then click [Save].  
The album is saved.



- If you save an album for the first time after the software installation, a message appears and asks if you want to register the association of the file extension name “jia”. Then, click [Yes].
- To exit Digital Photo Navigator, refer to “Exiting Digital Photo Navigator” (pg. 15).



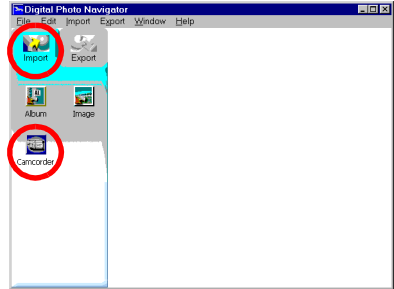
### NOTE:

*This function doesn't work if the recording time on the tape is shorter than 1 minute.*

## Capturing still images from the camcorder in real time

You can capture still images in real time, from the camcorder to the hard disk in the PC.

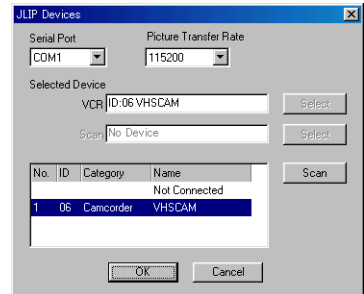
- 1 Set the Power Switch on the camcorder to "A" or "M".  
The camcorder is now on.
- 2 Click [Import].
- 3 Click [Camcorder]. The Controller window appears.



### NOTE:

If the camcorder is not connected to the PC, the camcorder is turned off, or the camcorder is connected to any serial port other than COM1, the [JLIP Devices] dialog box appears.

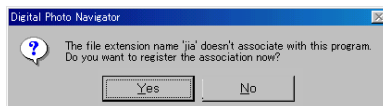
- 1) Connect the camcorder to the PC with the PC connection cable.
    - Refer to "CONNECTIONS (Windows®)" in the Setup Guide.
  - 2) Set the Power Switch on the camcorder to "A" or "M".  
The camcorder is now on.
  - 3) Select the appropriate setting for [Serial Port] depending on the port in use.
  - 4) Click [Scan].
  - 5) If the camcorder name [VHSCAM] appears, click [OK].
- 4 Click the Capture button when the desired image appears.
    - The image is transferred to the PC and thumbnail image appears to the right-hand side of the Digital Photo Navigator window.
  - 5 Repeat step 4 to capture additional images.



Capture

- 6 Click [Export] after capturing is completed.
- 7 Click [Album].  
The [Save As] dialog box appears.
- 8 Specify the location where you want to save the album, input the file name of the album, and then click [Save].  
The album is saved.

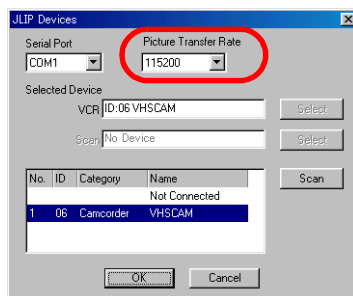
- If you save an album for the first time after the software installation, a message appears and asks if you want to register the association of the file extension name “jia”. Then, click [Yes].
- To exit Digital Photo Navigator, refer to “Exiting Digital Photo Navigator” ( pg. 15).



## Changing the transfer speed

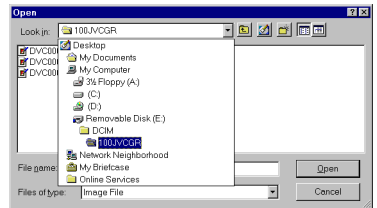
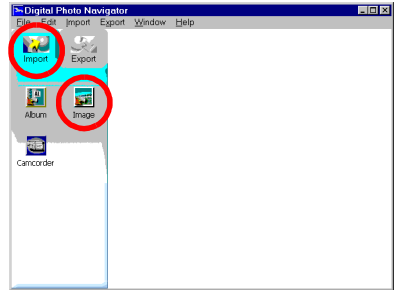
The default setting is 115200bps. Depending on the PC in use, transmission errors may occur. In this case, change to a lower serial speed setting, however, the rate of image transfer will be slower.

- 1 Right-click the Controller window and then, in the menu that appears, click [Device Setting].  
The [JLIP Devices] dialog box appears.
- 2 Select the desired setting for [Picture Transfer Rate].
- 3 Click [OK].



You can load the still image files (bitmap or JPEG format) from the hard disk in the PC to an album.

- 1** Start Digital Photo Navigator.
- 2** Click [Import].
- 3** Click [Image].  
The [Open] dialog box appears.
- 4** Open the folder that contains the desired still images.



- 5** Select the desired still image files and click [Open].  
The still images are added to the right-hand side of the Digital Photo Navigator window.
  - You may select more than one file.
  - You can also add files by dragging and dropping them in the Digital Photo Navigator window.
- 6** Add additional still images as desired by repeating steps 3 – 5.



**7** Click [Export].

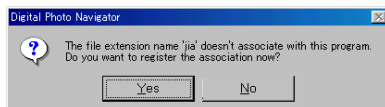
**8** Click [Album].

The [Save As] dialog box appears.

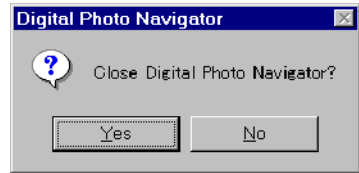
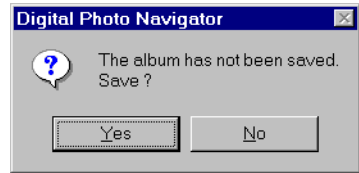
**9** Specify the location where you want to save the album, input the file name of the album, and then click [Save].

The album is saved.

- If you save an album for the first time after the software installation, a message appears and asks if you want to register the association of the file extension name “jja”. Then, click [Yes].
- To exit Digital Photo Navigator, refer to “Exiting Digital Photo Navigator” (pg. 15).



- 1** Click the [File] menu and then click [Exit].
  - If you have already saved an album, a confirmation message appears. Then, go to step **2**.
  - If you have not saved an album after capturing or loading still images, a confirmation message appears. To save an album, click [Yes]. The [Save as] dialog box appears. Specify the location where you want to save the album, input the file name of the album, and then click [Save]. A confirmation message appears. Then, go to step **2**. To exit Digital Photo Navigator without saving an album, click [No]. A confirmation message appears. Then, go to step **2**.
- 2** Click [Yes].  
Digital Photo Navigator closes.



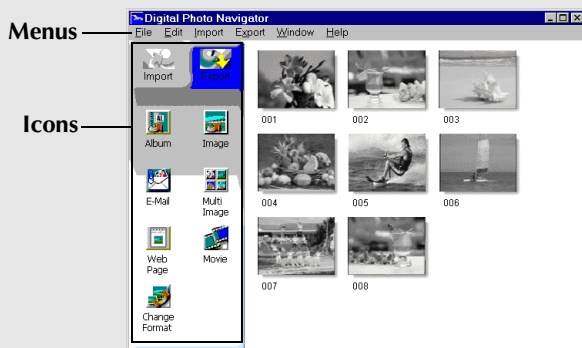
## Playing Back and Handling Images (Windows®)

This section explains how to handle still images using Digital Photo Navigator.

You can send still image files as an e-mail attachment and store an album as a web page. Be sure to read “Loading Still Images (Windows®)” before reading this section.

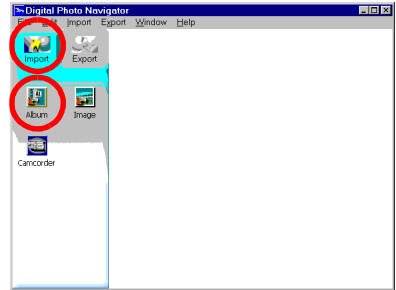
The icons on the Digital Photo Navigator window have the same functions as the menus. In this section, almost all the procedures are explained using the icons.

Read this section if you are using a Windows® operating system.

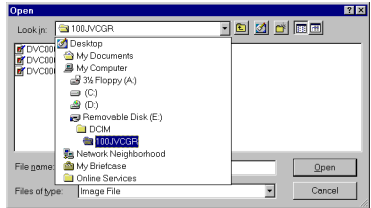




- 1 Start Digital Photo Navigator.
- 2 Click [Import].
- 3 Click [Album].  
The [Open] dialog box appears.



- 4 Open the folder where the album was saved.

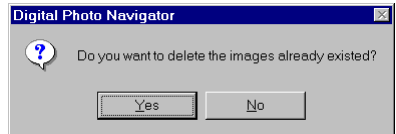


- 5 Click the desired album file, and then click [Open].  
The contents of the album are displayed in the right-hand side of the Digital Photo Navigator window.



#### NOTES:

- You can also open the album file by dragging and dropping it in the Digital Photo Navigator window.
- If an album is currently open, a confirmation message appears.
  - If you want to open the newly selected album instead of the one already opened, click [Yes]. If you have not saved the album already opened, a confirmation message appears. If you want to save the album, click [Yes]. If you do not want to save the album, click [No].
  - If you want to add still images from the newly selected album to the album already opened, click [No].






## Displaying a selected still image

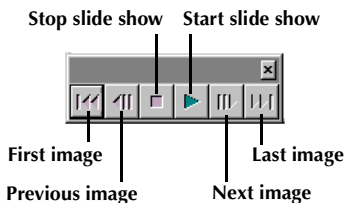
You can select for display any of the still images that are displayed in the right-hand side of the Digital Photo Navigator window.

- 1 Double-click the still image to be displayed.  
The [Image Viewer] window appears, and the selected image is displayed.



## Displaying a series of images

To display a series of images in “slide show” fashion, click the  button in the [Image Viewer] window. You can also move through the images manually in either direction by clicking the  and  buttons.



To adjust the speed of the slide show, right-click the [Image Viewer] window and then, in the menu that appears, click [Slide show] – [Setting Interval Time]. Set the length of the interval (in seconds), and then click [OK].

### NOTE:

*The interval for a slide show is a little longer than the setting because of display processing time.*

## Enlarging and reducing images

The following procedure describes how to change the display size of a still image.

- 1 Drag the corner of the [Image Viewer] window to change the size of the window to the desired display size.
- 2 Right-click the [Image Viewer] window and then, in the menu that appears, click [Zoom] – [Auto].

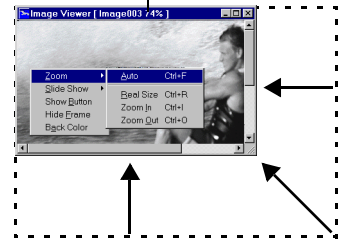
The size of the still image is automatically enlarged or reduced to fit the window, and the display magnification (enlargement/reduction percentage) indicated in the title bar of the window changes accordingly.

### Other enlargement/reduction functions

In addition to adjusting the size of the image to the size of the window, the display size of a still image can also be changed by the methods described below. Each of these functions can be selected by right-clicking the [Image Viewer] window.

- [Zoom] – [Real Size]: Displays the image in its original size (display magnification of 100%).
- [Zoom] – [Zoom In]: Displays the image at twice its current display magnification (up to 400%).
- [Zoom] – [Zoom Out]: Displays the image at half its current display magnification (up to 20%).

Display magnification



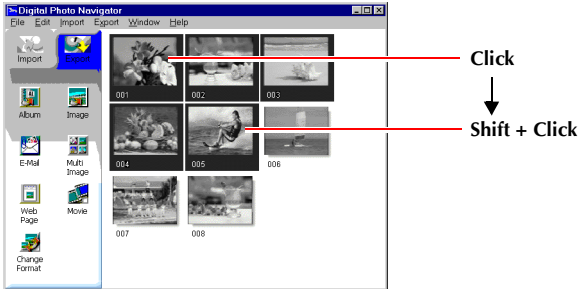
Whenever necessary, you can delete or copy still images that you have added to an album. The procedure described below only affects the still image in the album. It does not affect the original file of the still image that was added to the album.

## Selecting multiple still images

To delete or copy multiple still Images at once, select them in advance. You can also select all still images in the album.

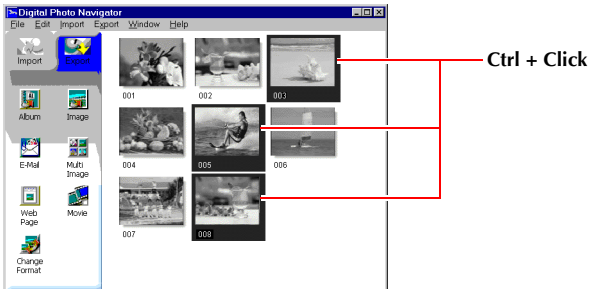
### Selecting still images continuously

Click still images while holding down the Shift key.



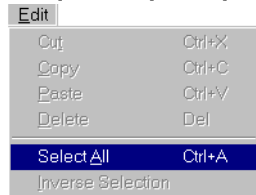
### Selecting still images one by one

Click still images while holding down the Ctrl key.



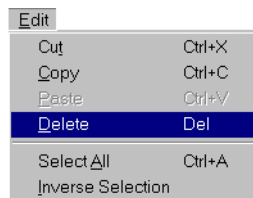
### Selecting all of the still images

Click [Select All] in the [Edit] menu.

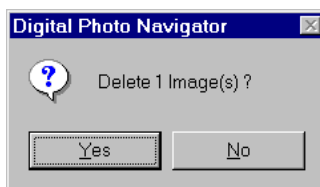


## Deleting unnecessary still images

- 1 Click the still image that you want to delete, and then click [Delete] in the [Edit] menu.  
A confirmation message appears.

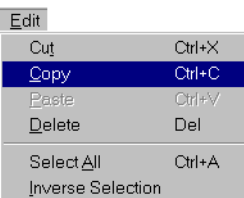


- 2 Click [Yes].  
The selected still images are deleted.



## Copying still images

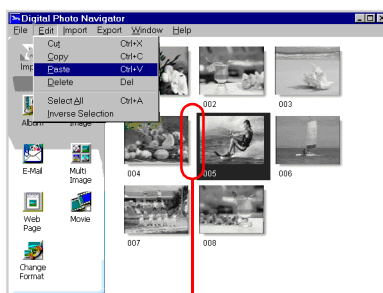
- 1 Click the still image that you want to copy, and then click [Copy] in the [Edit] menu.



- 2 Click the image that is located right after the insertion point.
  - To add the images at the end of the album, click the blank space in the right-hand side of the window.
- 3 Click [Paste] in the [Edit] menu.  
The copied still images are inserted right before the selected image.

### NOTE:

You can delete, copy or paste an image also by right-clicking it.



Insertion point

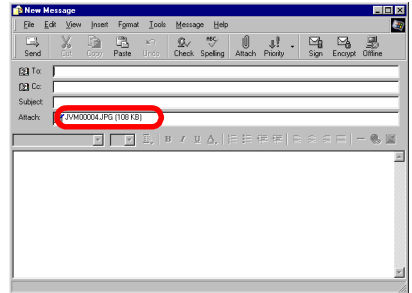
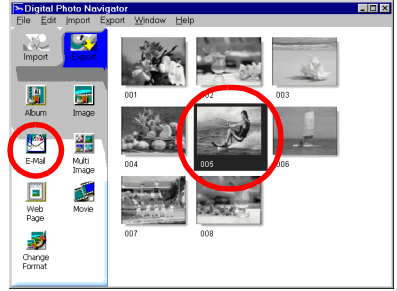
Still images in an album can be sent as an e-mail attachment.

1 Click the still image that you want to send, and then click [E-Mail].

The new message window in your e-mail program appears, and the still image file is registered as an attachment.

**NOTES:**

- Depending on an e-mail software, a new message window may not open when the [E-Mail] button is clicked.
- Depending on an e-mail software, settings such as "Set as MAPI client" or "Used by MAPI application" are necessary.
- The maximum number of messages that can be created at once is three.



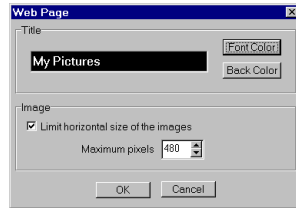
You can save the contents of an album in HTML format. This is useful in the following instances:

- When creating a web page: You can create a web page that features a collection of photos.
- When distributing an album: You can create an album in a format that can be displayed by a web browser. This is useful if you want to distribute the album on CD-R, etc.

- 1** Select the still images that you want to save in HTML format.
  - To select more than one still image, hold down the Shift key or the Ctrl key while clicking the images.
  - To select all of the still images, click [Select All] in the [Edit] menu.

- 2** Click [Web Page].  
The [Web Page] dialog box appears.

- 3** Set the following items when necessary.
  - [Title]: This will be the title of the web page.
  - [Font Color]: This specifies the color of the title text.
  - [Back Color]: This specifies the background color of the web page. (Specify a color other than the font color.)
  - [Limit horizontal size of the images]: This allows you to specify the maximum width of the image when displayed by a web browser. (Set the number of pixels much smaller than the width of the PC's display.)



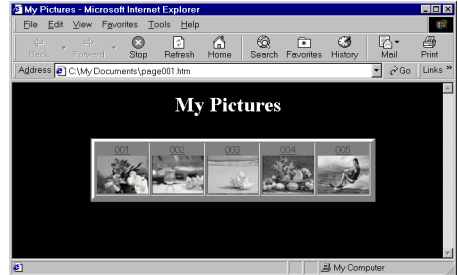
**4** Click [OK], specify the save location, and then click [Save].

The HTML file is saved, and a folder with the same name is saved at the same time. A confirmation message appears next, asking whether to display the web page.

**5** Click [Yes].

The web browser opens, and the HTML file that was created is displayed.

- Click on an image on the web page to enlarge it.



## What Next?

You can also view an HTML file through the web browser by double-clicking the HTML file. You can upload the HTML file to your home page, or save it on a CD-R or some other media and distribute it. Always handle HTML files and folders as a set. Without its folder, an HTML file cannot be viewed by a web browser.

### NOTES:

- For more details on how to create a home page, consult your Internet service provider's web site or one of the many reference books available.
- Use third-party home page creation software or similar software to edit HTML files.



## Changing the image size

This procedure describes how to change the size of an image that has been loaded into Digital Photo Navigator. This procedure is used to reduce the size of an image that is being attached to an e-mail or saved in an album.

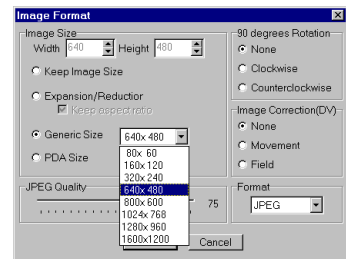
- 1** Select the still image to be changed.
  - To select more than one still image, hold down the Shift key or the Ctrl key while clicking the images.
  - To select all of the still images, click [Select All] in the [Edit] menu.
- 2** Click [Change Format].  
The [Image Format] dialog box appears.



- 3** Select one of the following items:
  - [Expansion/Reduction]: Set any desired image size in the [Width] and [Height] fields. If the [Keep aspect ratio] check box is not selected (off), both [Width] and [Height] fields can be changed.
  - [Generic Size]: Select the size from a list of generic sizes.
  - [PDA Size]: This is an image size (160 x 160) that can be displayed on most PDAs.

- 4** Click [OK].
  - If you select more than one still image in step 1, a confirmation message appears.
    - If you want to apply the same format to all images, click [Yes].
    - If you do not want to apply the same format, click [No]. The first image is saved. Then, select the image size for each image.

The image size is changed to the selected size. If the vertical-to-horizontal ratio was changed, the blank spaces are shown as black.



## Changing the picture quality, etc.

In addition to changing the size of an image, it is also possible to rotate images, change or correct the quality of an image, and change the file format of an image. The role of each setting is described in more detail below.

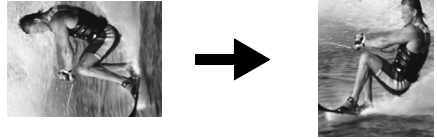
### [90 degrees Rotation]

If you hold the camcorder sideways when recording an image, you can create an image that is taller than it is wide. Because this still image will be displayed sideways, use this function to rotate the image 90 degrees to the portrait orientation.

[None]: No correction

[Clockwise]: Rotates the image 90 degrees clockwise.

[Counterclockwise]: Rotates the image 90 degrees counterclockwise.



### [Image Correction (DV)]

#### NOTE:

*This function is not available with VHS-C camcorders.*

Sometimes, when you shoot a subject that is moving very quickly, the resulting image will be blurred. It is possible to correct this blurring to a certain extent. Because the optimal type of correction depends on the still image, we recommend making a copy of the image and experimenting with the copy. It is not possible to correct for blurring caused by shaking the camera while shooting.

[None]: No correction

[Movement]: Corrects only the blurred portions.

[Field]: Corrects blurring more quickly than [Movement].

### [Format]

You can select the file format of an image.

[JPEG]: This is the format that is typically used on the Internet. This format has a smaller file size.

[BITMAP]: This is the standard Windows® image format (BMP). Many applications can use this format.

### [JPEG Quality]

This setting is available when JPEG was selected in the [Format] field. Moving the slider to the left makes the file smaller. Moving the slider to the right results in less deterioration in the image quality. The initial setting is 75.

#### NOTES:

- When [JPEG] is selected in the [Format] field, the quality of the image deteriorates slightly each time that [OK] is clicked for the [Image Format] dialog box. To restore the original image quality, reload the original still image file.
- To confirm the file size, right-click the still image and then select [Properties].

You can retrieve still images from an album and save them as a file.

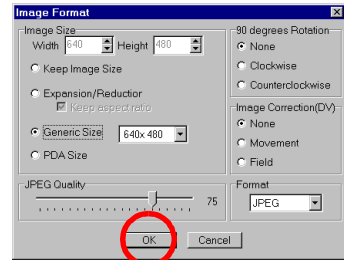
- 1** Select the still image to be retrieved.
  - To select more than one still image, hold down the Shift key or the Ctrl key while clicking the images.
  - To select all of the still images, click [Select All] in the [Edit] menu.
- 2** Click [Image].  
The [Image Format] dialog box appears.



- 3** Change the image format as desired. (refer to pg. 25, 26)  
Then, click [OK].  
The [Save As] dialog box appears.

- 4** Specify the location where you want to save the file, input the file name, and then click [Save].  
The image file is saved.

- If you select more than one still image in step 1, a confirmation message appears.
  - If you want to save all images with the same image format and their default name, click [Yes]. The [Auto Save Result] dialog box appears. Then, click [OK].
  - If you want to set the image format and input file name for each image, click [No]. The first image is saved. The [Image Format] dialog box appears for the second image. Repeat steps 3 and 4 as many times as necessary.



You can arrange multiple still images together and save them in a single still image file.

**1** Holding down the Shift key or the Ctrl key, select the still images that are to be added to the list.

**2** Click [Multi Image].

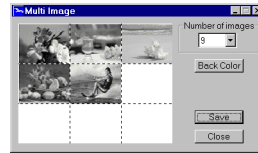
The [Multi Image] dialog box appears.



**3** Select the number of partitions.

- Either 4, 9, or 16 partitions may be selected.

**4** Click [Back Color], select the color for the overall background, and then click [OK].

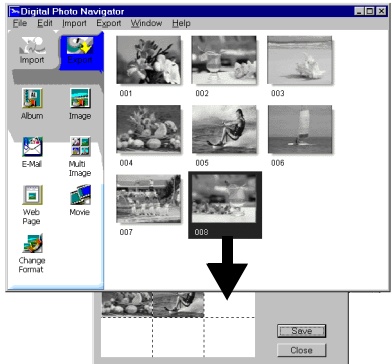


**5** Change the positions of the still images as desired.

- Deleting an image: Right-click the still image and then select [Delete].
- Adding an image: Drag an image from the right-hand side of the Digital Photo Navigator window to the [Multi Image] dialog box.

**6** Click [Save].

The [Image Format] dialog box appears.

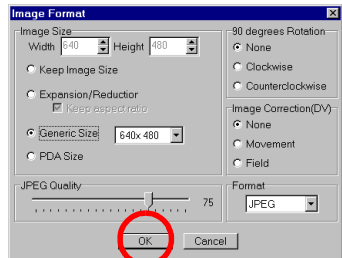


**7** Change the image format as desired. (☞ pg. 25, 26)  
Then, click [OK].

The [Save As] dialog box appears.

**8** Specify the location where you want to save the file, input the file name, and then click [Save].

The still image list file is saved.

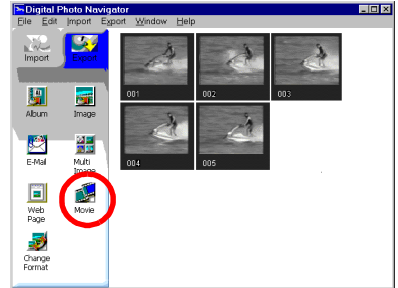


You can create a slide show or an animation in which a series of still images are displayed, and then save those images as a movie file (extension “.avi”).

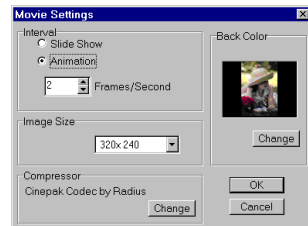
[Slide Show]: Still images are displayed for several seconds each, one at a time.

[Animation]: Several still images are displayed per second. We recommend that you select a series of still images that create the appearance of continuous movement.

- 1** Holding down the Shift key or the Ctrl key, select several still images.
- 2** Click [Movie].  
The [Movie Settings] dialog box appears.



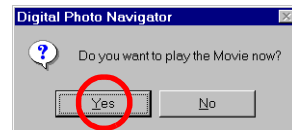
- 3** Select either [Slide Show] or [Animation], which ever is desired.
  - For a slide show, set the length of the interval (in seconds).
  - For an animation, set the number of displayed frames (images) per second.
- 4** Set the following items when necessary.
  - [Image Size]: Select the size of the movie file.
  - [Compressor]: Select the type of compressor.
  - [Back Color]: This item is used if the aspect ratio of the images is not 4:3.



- 5** Click [OK].  
The [Save As] dialog box appears.
- 6** Specify the location where you want to save the file, input the file name, and then click [Save].  
The movie file is saved, and a confirmation message that asks if you want to play the movie now appears.
- 7** Click [Yes].  
The movie file is played back.

**NOTES:**

- If you change the [Compressor] item, make sure that the playback system supports that type of compressor.
- Depending on the selected type for [Compressor], a movie file cannot be created.
- In some cases, the settings in the [Video Compression] dialog box are invalid.



---

---

## Digital Photo Navigator (Macintosh)

---

---

You can capture still images from the recorded camcorder tape, or from the camcorder in real time. The Digital Photo Navigator software allows you to store and view still images in the hard disk of the PC.

The icons on the Digital Photo Navigator window have the same functions as the menus. In this section, almost all the procedures are explained using the icons.

Read this section if you are using a Macintosh operating system.



**Preparation**

- 1** Connect the camcorder to the PC with the PC connection cable and the USB PDA ADAPTER.
  - Refer to "CONNECTIONS (Macintosh)" in the Setup Guide.
  - Never disconnect the PC connection cable or the USB PDA ADAPTER while Digital Photo Navigator is running.

- 2** Open the [Digital Photo Navigator 1.0] folder.
  - Close any other programs running on the PC.
  - Disable any programs that run in the background, such as screen savers, e-mail applications, virus checkers, schedulers, etc.
  - Turn off file and printer sharing.



- 3** Double-click the [Digital Photo Navigator] icon.  
The port selection dialog box appears.

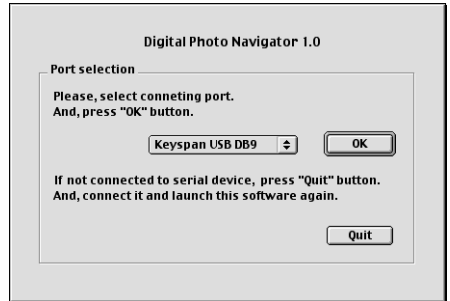


- 4** Select [Keyspan USB DB9]\* for connecting port and click [OK].

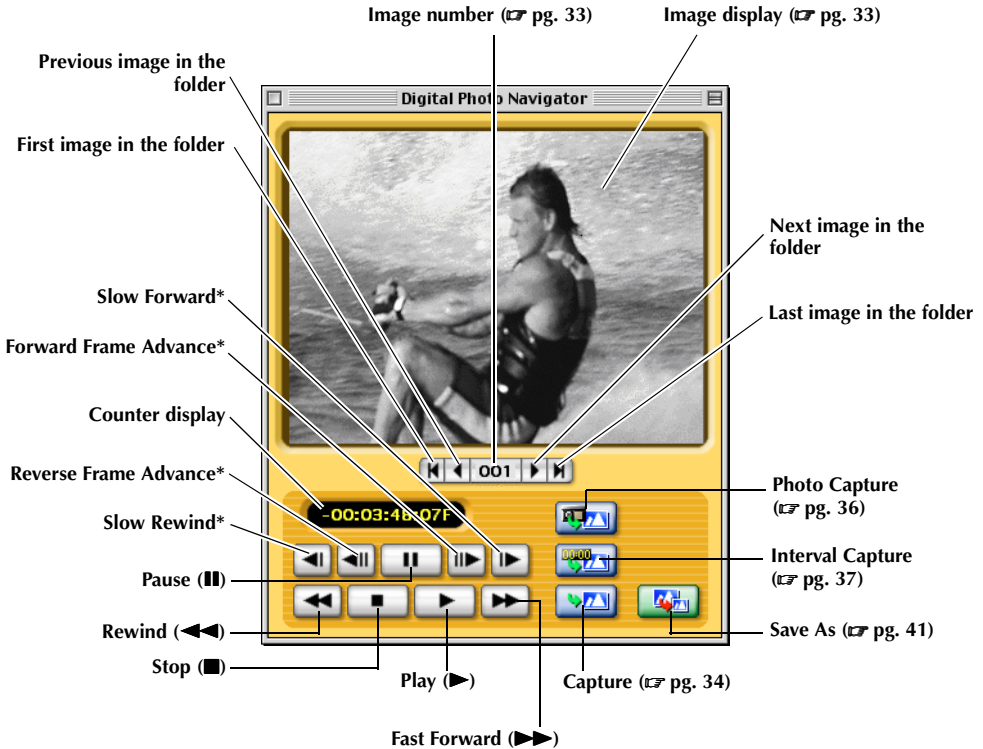
Digital Photo Navigator starts.

- If you start Digital Photo Navigator at the first time, a "pictures000" folder for saving images is automatically created in the [Digital Photo Navigator 1.0] folder.

\* The name of connecting port may differ depending on the driver version.



## Digital Photo Navigator window



\* This function is not available with VHS-C camcorders.

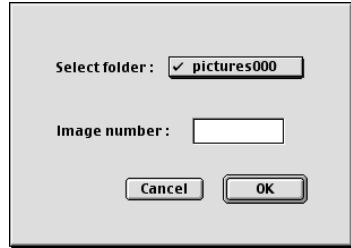
### NOTES:

- Use only the operation buttons to control the camcorder. If you operate the camcorder with its own operation buttons, the appearance may not correspond to the status of the camcorder, or it may cause a malfunction to occur in Digital Photo Navigator.
- If an image is captured in the Pause or Slow Play mode, some noise may appear on the captured image. In this case, capture the image during normal playback.



### Image selection dialog box

If the image number button is clicked, the image selection dialog box appears. Select the desired folder, input the desired image number and click [OK]. The specified image is displayed. This function is convenient when you open an already captured image to save it in other directory or in another file format, or change the image size and save it with different name. (☞ pg. 41, 42)

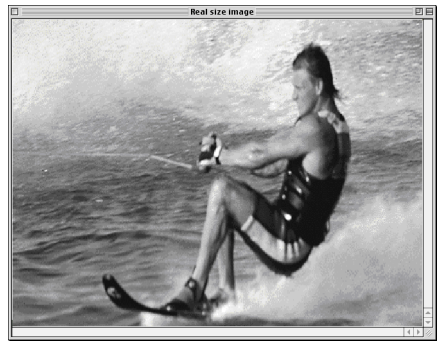


### Image display

Displays the captured image. To display the [Real size image] window, click the image display.

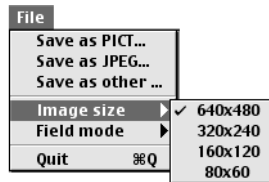
### [Real size image] window

You can view the captured image in real size.



### Changing the display size of the [Real size image] window

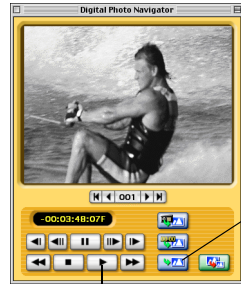
Select the desired setting from a list of generic sizes of [Image size] in the [File] menu.



## Capturing still images from tape

You can capture still images from the camcorder tape on the PC.

- 1** Set the Power Switch on the camcorder to "PLAY".  
The camcorder is now on.
- 2** Click the Play (▶) button.  
Playback of the camcorder tape starts.
- 3** Click the Capture button when the desired image appears.  
The image is transferred to the PC and it is displayed in the image display after transferring.
  - The image file is automatically saved as JPEG format file in the folder "pictures000".
  - The first image file is named "image001" and the number increases one by one each time new image is captured.
- 4** Repeat steps 2 and 3 to capture additional images.



## Capturing still images from the camcorder in real time

You can capture still images in real time, from the camcorder to the hard disk in the PC.

- 1** Set the Power Switch on the camcorder to "A" or "M".  
The camcorder is now on.
- 2** Click the Capture button when the desired image appears.  
The image is transferred to the PC and it is displayed in the image display after transferring.
  - The image file is automatically saved as JPEG format file in the folder "pictures000".
- 3** Repeat step 2 to capture additional images.



## Automatic Capture

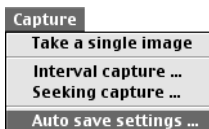
You can automatically capture still images from the camcorder tape on the PC according to your preferences. There are 2 ways available: "Photo Capture" and "Interval Capture".

### NOTES:

- Depending on your PC's specifications and operating environment, the points where images are captured may not match what was set in the preferences.
- If the videotape is damaged, the points where images are captured may not match what was set in the preferences.
- Automatic capture may not function properly if portions of the videotape are unrecorded.
- Automatic Capture may not function properly when, for example, you capture images recorded after the recording speed was changed. In these cases, capture images by performing the steps in "Capturing still images from tape" (☞ pg. 34).
- Automatic capture stops when the number of images in the folder for saving images (such as "pictures001") reaches 100 or the videotape ends.

### Preparation: Specifying the location where you want to save the images

- 1 Select [Auto save settings...] in the [Capture] menu.  
The [Data save settings] dialog box appears.



- 2 Specify the location where you want to save the images. You have 2 choices.

#### When saving the images in a new folder:

Click [Separating folder].

Each time Automatic Capture is performed, a new folder named "picturesXXX" (The number increases from 001 and up to 099) is automatically created in the [Digital Photo Navigator 1.0] folder. The images are saved in the new folder.

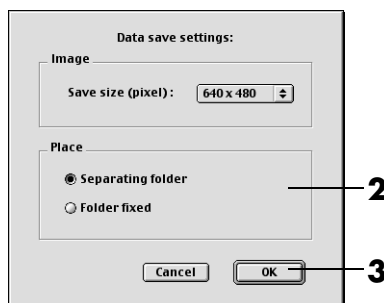
#### When saving the images in the "pictures000" folder:

Click [Folder fixed].

- You can select the size of an image to be captured. (☞ pg. 39)

- 3 Click [OK].

After preparations, perform the steps in "Photo Capture" (☞ pg. 36) or "Interval Capture". (☞ pg. 37)



## Photo Capture

You can capture only snapshot images recorded on a tape.

- 1 Click the Photo Capture button.  
The [Photo scene search capture setting] dialog box appears.

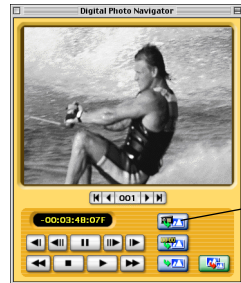
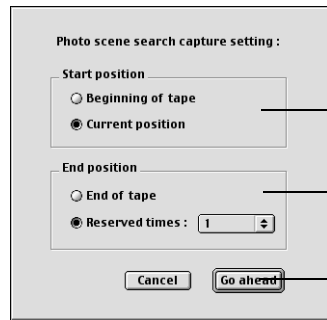


Photo Capture

- 2 Select the tape position to start capturing.
  - To start capturing from the beginning of the tape: Click [Beginning of tape].
  - To start capturing from the current tape position: Click [Current position].
- 3 Select how to stop capturing.
  - To capture all the Snapshots to the end of the tape: Click [End of tape].
  - To specify the number of images to be captured: Click [Reserved times] and then select the number of images.
- 4 Click [Go ahead].



### NOTE:

*Photo Capture may not function properly when, for example, the camcorder tape includes snapshot images recorded after the recording speed was changed, or when snapshot images were continuously recorded. In these cases, capture images by performing the steps in "Capturing still images from tape" (pg. 34).*

## Interval Capture

You can capture images at specified intervals. This function is useful for summarizing the contents of a tape, or for watching time-lapse movies using the slide show. Also, you can capture a specific subject with subtle changes over an extended period of time when capturing still images from the camcorder in real time.

### [Capturing still images from tape]

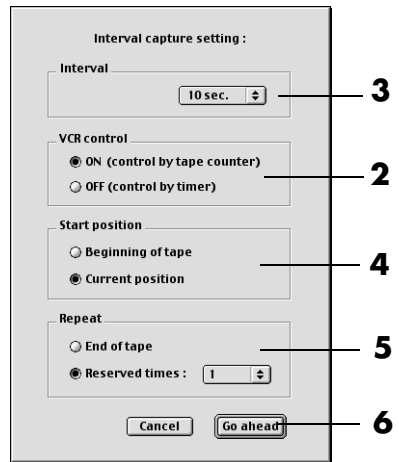
- 1** Click the Interval Capture button.  
The [Interval capture setting] dialog box appears.
- 2** Select [ON (control by tape counter)] for VCR control control.



- 3** Select the length of the interval (in seconds or minutes).
- 4** Select the tape position to start capturing.
  - To start capturing from the beginning of the tape: Click [Beginning of tape].
  - To start capturing from the current tape position: Click [Current position].
- 5** Select how to stop capturing.
  - To stop capturing at the end of tape: Click [End of tape].
  - To specify the number of images to be captured: Click [Reserved times] and then select the number of images.
- 6** Click [Go ahead].

**NOTE:**

*This function doesn't work if the recording time on the tape is shorter than 1 minute.*

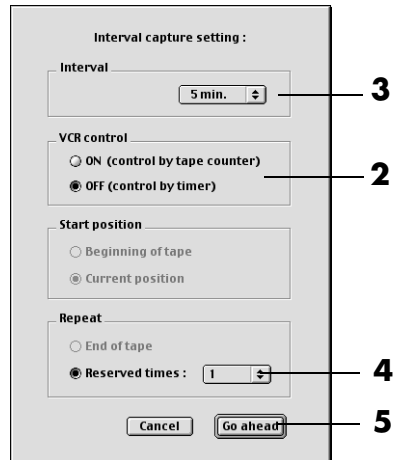


**[Capturing still images from the camcorder in real time]**

- 1** Click the Interval Capture button.  
The [Interval capture setting] dialog box appears.
- 2** Select [OFF (control by timer)] for VCR control.

Interval  
Capture

- 3** Select the length of the interval.
  - You can select 5 minutes or more for the length of the interval.
- 4** Select the number of images to be captured.
- 5** Click [Go ahead].



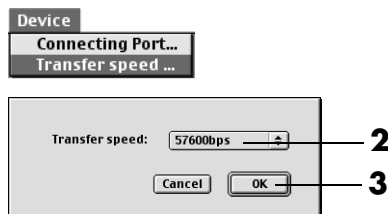
## Changing the transfer speed

The default setting is 57600bps. Depending on the PC in use, transmission errors may occur. In this case, change to a lower serial speed setting, however, the rate of image transfer will be slower.

**1** Select [Transfer speed...] in the [Device] menu.

**2** Select the desired setting.

**3** Click [OK].



## Changing the image size

You can select the size of an image to be captured.

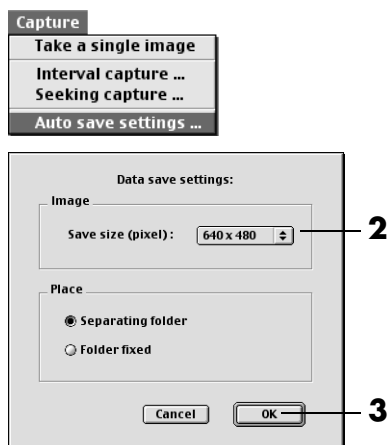
**1** Select [Auto save settings...] in the [Capture] menu.  
The [Data save settings] dialog box appears.

**2** Select the image size from a list of generic sizes.

**3** Click [OK].

### NOTE:

You can also change the size of an image after capturing.  
(☞ pg. 42) Note that if an image is enlarged to the size larger than its original, it will take on a mosaic appearance.



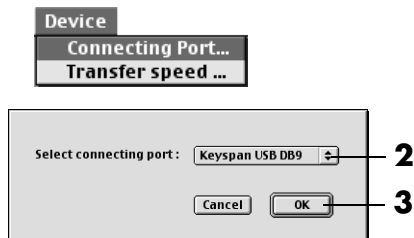
## Changing the connecting port

If you connect two or more serial devices to the PC, select the connecting port depending on the camcorder in use.

**1** Select [Connecting Port...] in the [Device] menu.

**2** Select the desired connecting port.

**3** Click [OK].



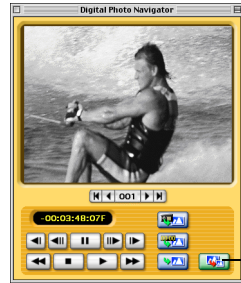
- 1 Select [Quit] in the [File] menu.  
Digital Photo Navigator closes.





## Saving the captured image in other directory

- 1 Right after capturing an image or displaying the desired image in the image display (☞ pg. 32, 33), click the Save As button.  
The [Save] dialog box appears.
- 2 Specify the location where you want to save the file, input the file name, and then click [Save].  
The image file is saved.



## Saving the captured image in another file format

### PICT format

- 1 Right after capturing an image or displaying the desired image in the image display (☞ pg. 32, 33), select [Save as PICT...] in the [File] menu.  
The [Save] dialog box appears.
- 2 Specify the location where you want to save the file, input the file name, and then click [Save].  
The image file is saved.



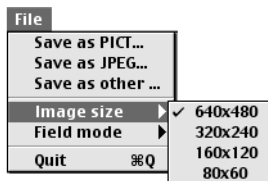
### Any format other than JPEG or PICT

- 1 Right after capturing an image or displaying the desired image in the image display (☞ pg. 32, 33), select [Save as other...] in the [File] menu.  
The [Save] dialog box appears.
- 2 Select the desired file format.
- 3 Specify the location where you want to save the file, input the file name, and then click [Save].  
The image file is saved.



## Saving the captured image in another image size

- 1 Right after capturing an image or displaying the desired image in the image display (☞ pg. 32, 33), select the desired setting from a list of generic sizes of [Image size] in the [File] menu.
- 2 Click the Save As button. Select [Save as PICT...] or [Save as other...] in the [File] menu.
- 3 Specify the location where you want to save the file, input the file name, and then click [Save].  
The image file is saved.



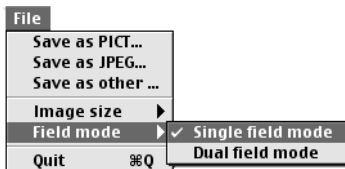
### NOTES:

- You can check the selected image size with the [Real size image] window. (☞ pg. 33) However, close the [Real size image] window before saving an image.
- Note that if an image is enlarged to the size larger than its original, it will take on a mosaic appearance.

## Saving the captured image after changing the field mode

Normally, captured images are saved in [Dual field mode]. When you shoot a subject that is moving quickly, it is recommended to select [Single field mode] and save the image.

- 1 Right after capturing an image or displaying the desired image in the image display (☞ pg. 32), select [Single field mode] of [Field mode] in the [File] menu.
- 2 Click the Save As button. Select [Save as PICT...] or [Save as other...] in the [File] menu.
- 3 Specify the location where you want to save the file, input the file name, and then click [Save].  
The image file is saved.



---

---

## Appendix

---

---

This appendix contains troubleshooting and index.

## Windows®

SYMPTOM	CORRECTIVE ACTION	REFER TO:
Although the PC connection cable is connected, Digital Photo Navigator cannot control the camcorder.	<ul style="list-style-type: none"> <li>• Make sure that the AC Adapter is connected to the camcorder and that the power is on.</li> <li>• Make sure that the PC connection cable is connected securely.</li> </ul>	Setup Guide
The connected camcorder cannot be detected. The COM port cannot be set.	<ul style="list-style-type: none"> <li>• Make sure that the AC Adapter is connected to the camcorder and that the power is on.</li> <li>• Make sure that the PC connection cable is connected securely.</li> <li>• If it is still not detected after clicking [Scan] in the [JLIP Devices] dialog box two or three times, try turning off your PC and camcorder. Confirm the connection between them then turn them both back on.</li> <li>• Confirm that the [JLIP Devices] dialog box is operating properly after clicking [Scan].</li> <li>• If you are using a built-in modem or IrDA, the RS-232C COM port may be occupied. In this case, right-click [My Computer], then select [Properties]–[System Properties]–[Device Manager]. Click [Ports (COM &amp; LPT)] to confirm which COM port is available. If all the COM ports are occupied, set the COM port used by the modem or IrDA driver to [Invalid].</li> <li>• If a USB or Digital Still Camera driver is installed on your PC, you may not be able to use the RS-232C port.</li> <li>• Depending on your PC's specifications, you may need to change the BIOS settings.</li> </ul>	Setup Guide  pg. 6 Setup Guide  pg. 6 Setup Guide  —  —  —
Cannot copy or save files.	<ul style="list-style-type: none"> <li>• Make sure that there is enough free space available in the drive where you are trying to copy or save a file.</li> <li>• Make sure that the drive where you are trying to copy or save a file is not write-protected.</li> <li>• Make sure that a file with the same name does not already exist where you are trying to copy or save a file.</li> </ul>	—

## Windows® (cont.)

SYMPTOM	CORRECTIVE ACTION	REFER TO:
Cannot load still images into Digital Photo Navigator.	<ul style="list-style-type: none"> <li>• Sometimes the format of the still image data prevents it from being loaded into Digital Photo Navigator. Use other graphics drawing or processing software to convert the file to either bitmap format or JPEG format.</li> <li>• Make sure that there is enough free space available in the drive in which Digital Photo Navigator is installed.</li> </ul>	—
Still images have a mosaic appearance.	<ul style="list-style-type: none"> <li>• When a small image is loaded and enlarged, it will take on a mosaic appearance.</li> <li>• If an image is saved with a lower JPEG quality or if the format of the image is changed, it will take on a mosaic appearance.</li> </ul>	pg. 19 pg. 26
The colors displayed on the PC are odd.	<ul style="list-style-type: none"> <li>• Images will not be displayed correctly if the display is set for 256-color (or fewer) display.</li> </ul>	—
Automatic capture does not function.	<ul style="list-style-type: none"> <li>• This function may not operate correctly sometimes depending on your PC's specifications and operating environment.</li> <li>• This may occur if correct data is not being transmitted due to damage on the videotape.</li> <li>• There may be software running in the background. Confirm that there are no programs running in the background that may be using the processor at the same time as Digital Photo Navigator.</li> </ul>	—
Communication error occurs in capturing images. (Capturing is interrupted and camcorder does not function properly.)	<ul style="list-style-type: none"> <li>• If the PC connection cable is not connected properly, communication may be interrupted and error occurs. Disconnect the AC Adapter from the camcorder, connect the PC connection cable properly, and then perform capturing again.</li> </ul>	Setup Guide

**NOTE:**

When using a laptop PC, operation may be interrupted by a warning when the battery is nearly exhausted.

- If there is software which monitors the status of the battery running in the [StartUp] folder...  
Close the application, or delete/move its icon from the [StartUp] folder and reboot your PC.
- If you are using your PC's power management function...  
Right-click the [My Computer] icon, then select [Properties]–[System Properties]–[Device Manager]–[System Devices]–[Advanced Power Management Support]. Deactivate the power management function.

## Macintosh

SYMPTOM	CORRECTIVE ACTION	REFER TO:
Although the PC connection cable is connected, Digital Photo Navigator cannot control the camcorder.	<ul style="list-style-type: none"> <li>• Make sure that the AC Adapter is connected to the camcorder and that the power is on.</li> <li>• Make sure that the PC connection cable is connected securely.</li> </ul>	Setup Guide
Cannot copy or save files.	<ul style="list-style-type: none"> <li>• Make sure that there is enough free space available in the drive where you are trying to copy or save a file.</li> <li>• Make sure that the drive where you are trying to copy or save a file is not write-protected.</li> <li>• Make sure that a file with the same name does not already exist where you are trying to copy or save a file.</li> </ul>	—
Automatic capture does not function.	<ul style="list-style-type: none"> <li>• This function may not operate correctly sometimes depending on your PC's specifications and operating environment.</li> <li>• This may occur if correct data is not being transmitted due to damage on the videotape.</li> <li>• There may be software running in the background. Confirm that there are no programs running in the background that may be using the processor at the same time as Digital Photo Navigator.</li> </ul>	—
Communication error occurs in capturing images. (Capturing is interrupted and camcorder does not function properly.)	<ul style="list-style-type: none"> <li>• If the PC connection cable is not connected properly, communication may be interrupted and error occurs. Disconnect the AC Adapter from the camcorder, connect the PC connection cable properly, and then perform capturing again.</li> </ul>	Setup Guide

**Windows®****A**

- Adding still images to an album .....13
- Automatic Capture .....8

**C**

- Capturing still images from tape .....6
- Capturing still images from the camcorder  
in real time .....11
- Changing the image size .....25
- Changing the picture quality, etc. ....26
- Changing the transfer speed .....12
- Controller window .....8
- Copying still images .....21
- Creating a list of still images .....28
- Creating a slide show or an animation .....29
- Creating a web page .....23

**D**

- Deleting unnecessary still images .....21
- Displaying a selected still image .....18
- Displaying a series of images .....18

**E**

- Enlarging and reducing images .....19
- Exiting Digital Photo Navigator .....15

**I**

- Interval Capture .....10

**L**

- Loading an album .....17

**P**

- Photo Capture .....9

**R**

- Retrieving still images from an album .....27

**S**

- Selecting multiple still images .....20
- Sending images from an album in e-mail .....22

**Macintosh****A**

- Any format other than JPEG or PICT .....41
- Automatic Capture .....35

**C**

- Capturing still images from tape .....34
- Capturing still images from the camcorder  
in real time .....34
- Changing the connecting port .....39
- Changing the image size .....39
- Changing the transfer speed .....39

**D**

- Digital Photo Navigator window .....32

**E**

- Exiting Digital Photo Navigator .....40

**I**

- Image display .....33
- Image selection dialog box .....33
- Interval Capture .....37

**P**

- Photo Capture .....36
- PICT format .....41

**S**

- Saving the captured image after changing  
the field mode .....42
- Saving the captured image in another  
file format .....41
- Saving the captured image in another  
image size .....42
- Saving the captured image in other directory ....41

